



**SAXON SHORE**  
— ESTATE AGENTS —



## **12 Harold Ct Canute Road, Faversham, ME13 8TF**

### **Offers in excess of £550,000**

Discover this stunning three-bedroom terrace property, lovingly converted from a former Edwardian school. Thoughtfully modernised while retaining an abundance of original features and charm, this exceptional home is tucked away in a quiet close just a short walk from Faversham's vibrant town centre and the mainline station, within the catchment area for several well-rated local schools.

The ground floor offers a welcoming porch and a generous open-plan lounge/dining room where floor-to-ceiling windows flood the space with natural light. A working wood burner makes this the perfect spot for cosy evenings. The stylish kitchen features integrated appliances, a wine fridge and a characterful butler sink. An office and WC complete this level—all showcasing stunning original parquet flooring throughout.

Upstairs, three generously sized double bedrooms await, one with built-in wardrobes, alongside a full family bathroom.



## Porch

9'8" x 3'10" (2.96 x 1.18)

## Lounge/Diner

25'1" x 15'4" (7.65 x 4.68)



## Kitchen

15'8" x 8'9" (4.78 x 2.68)



## WC

2'11" x 4'3" (0.9 x 1.3)



## Office

9'4" x 8'9" (2.87 x 2.68)



## Landing



## Bedroom 1

14'9" x 11'6" (4.5 x 3.52)



## Bedroom 2

13'5" x 8'9" (4.1 x 2.68)



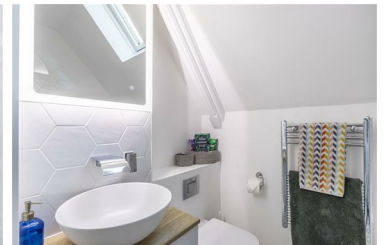
## Bedroom 3

11'7" x 8'9" (3.55 x 2.68)



## Bathroom

8'11" x 7'0" (2.73 x 2.15)



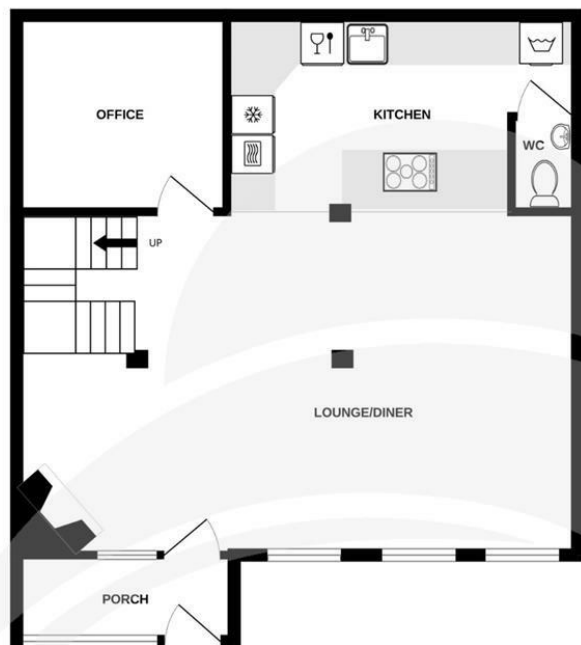
## Garden



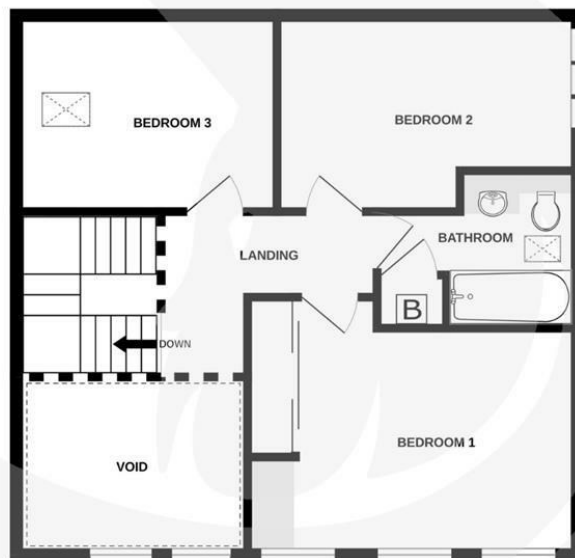
## Driveway



GROUND FLOOR  
58.7 sq.m. (631 sq.ft.) approx.



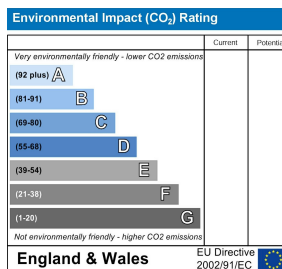
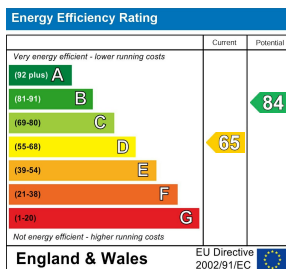
1ST FLOOR  
56.3 sq.m. (606 sq.ft.) approx.



TOTAL FLOOR AREA : 115.0 sq.m. (1237 sq.ft.) approx.

Whilst every attempt has been made to ensure the accuracy of the floorplan contained here, measurements of doors, windows, rooms and any other items are approximate and no responsibility is taken for any error, omission or mis-statement. This plan is for illustrative purposes only and should be used as such by any prospective purchaser. The services, systems and appliances shown have not been tested and no guarantee as to their operability or efficiency can be given.

Made with Metropix ©2026



The Alexander Centre 15 - 17 Preston Street, Faversham, ME13 8NZ

Tel: 01795 533577

info@saxonshore.co.uk

www.saxonshore.uk



SAXON SHORE  
- ESTATE AGENTS -